

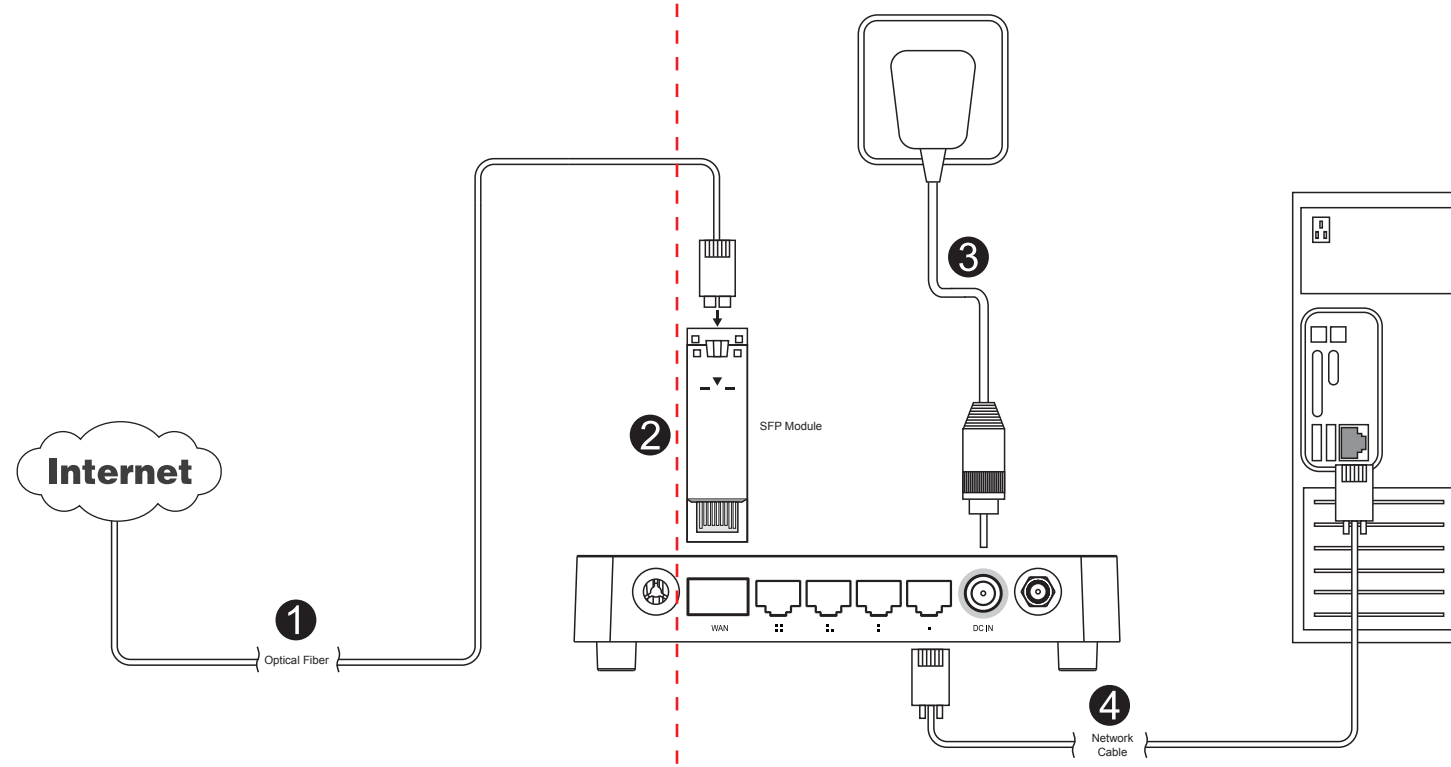
## Quick Installation Guide

### TOTOLINK F1 SOHO Fiber Router

Copyrights 2013 by TOTOLINK All rights reserved. Website: <http://www.totolink.net>  
Information in this document is subject to change without prior notice.

# 1 Hardware Installation

The WAN port of TOTOLINK F1 must work with a Small Form Pluggable Module. Please follow steps in below diagram in correct order.



After connected, please check whether the indicator lights are normal.

Name	Normal Status
Power	This indicator lights blue when the router is powered on, otherwise it is off.
CPU	When the router is powered on, this indicator keeps lighting blue.
WLAN	The indicator blinks blue while the WiFi of the Router is on.
WAN	On: When the WAN port is connected successfully the indicator lights blue. Blink: During transmitting or receiving data through the WAN port the indicator blinks blue. Off: There is no device linked to the WAN port.
LAN	On: When the LAN port has a successful connection, the indicator lights blue. Blink: During transmitting or receiving data through the LAN port the indicator blinks blue. Off: There is no device linked to the WAN port.

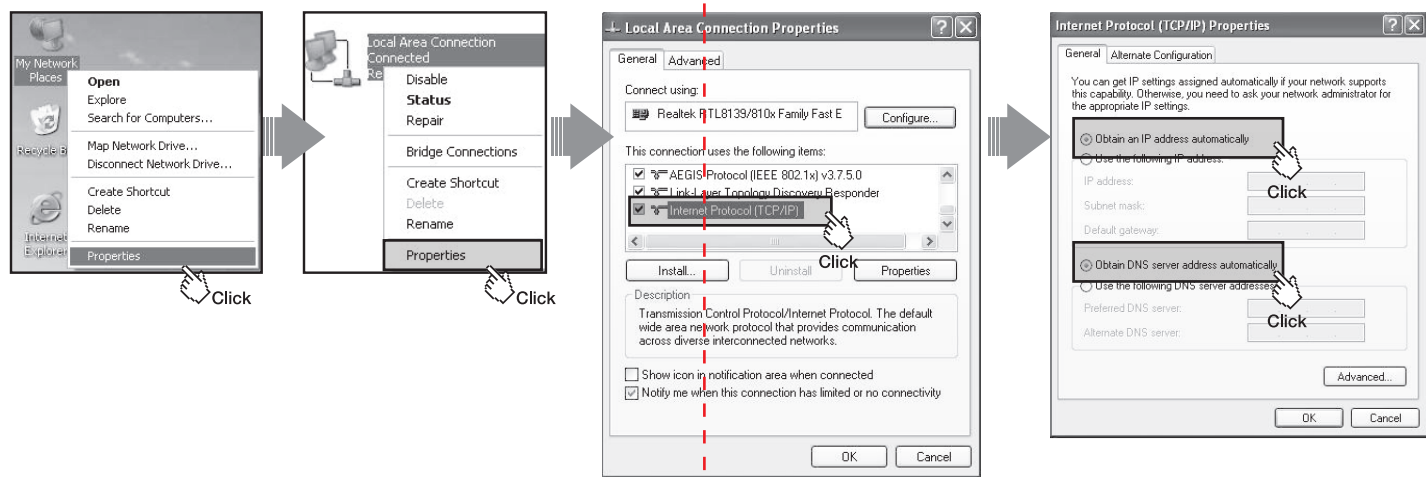
### NOTE:

1. Please disconnect the power adapter and all cables during thunderstorm weather;
2. Keep away from heat source and keep well ventilated;
3. Please pay attention to the waterproofing and moisture-proof when storing, transporting and running;
4. The power supply must reach the rated current and power.
5. Put the router in flat places.

# 2 Set Up PC

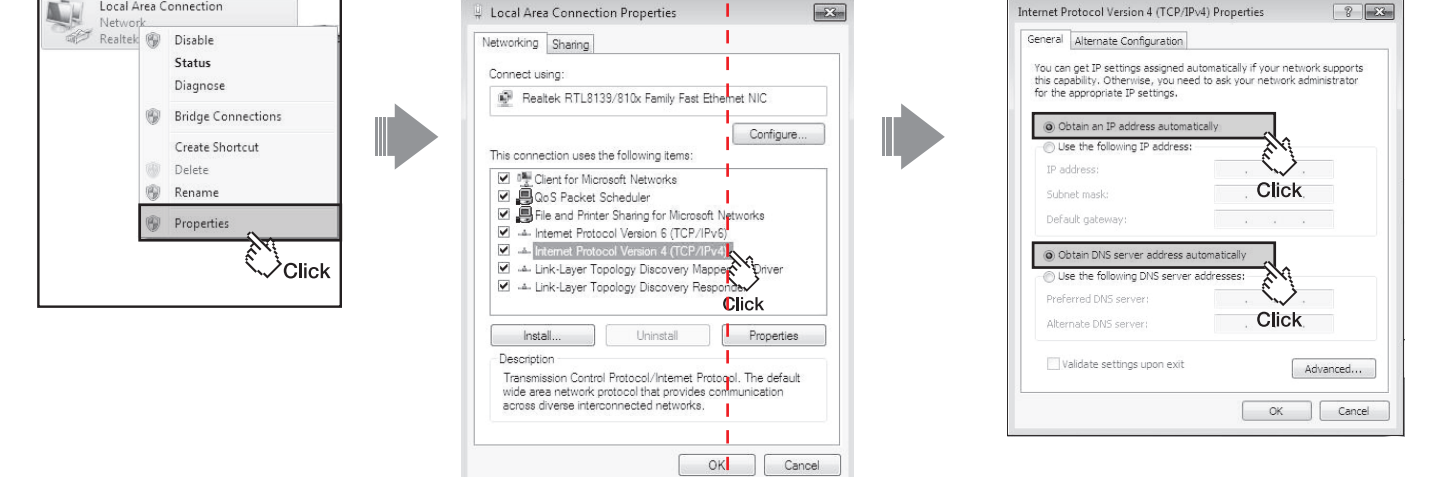
**Windows 2000/XP** For Windows 2000 or Windows XP Operating System, please comply with following steps to set up.

1. Right-click "My Network Places", click "Properties"
2. Right-click "Local Area Connection", click "Properties"
3. Double-click "Internet Protocol (TCP/IP)"
4. Choose "Obtain an IP address automatically" and "Obtain DNS server address automatically", click "OK"; go back to previous interface and click "OK"



**Windows Vista/7** For Windows Vista or Windows 7 Operating System, please comply with following steps to set up.

1. Click "Start—Control Panel—Network and Internet—Network Connection", right-click "Local Area Connection", and choose "Properties".
2. Double-click "Internet Protocol Version 4 (TCP/IPv4)"
3. Choose "Obtain an IP address automatically" and "Obtain DNS server address automatically", click "OK"; go back to previous interface and click "OK"



# 3 Set Up Router

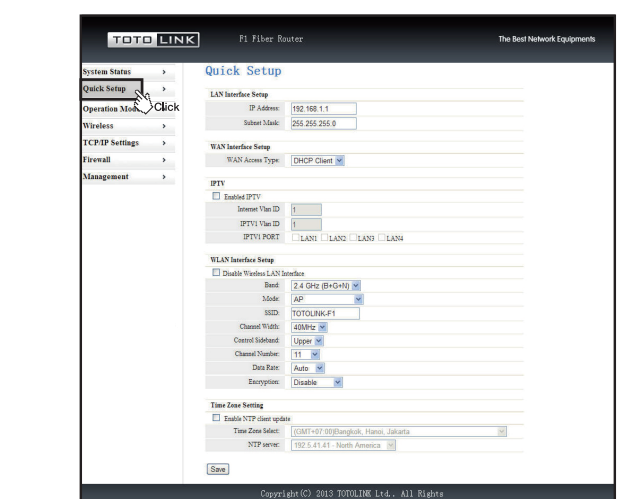
Please set up the router following below steps.

1. Run the Web browser.

2. Type 192.168.1.1 in the Web browser address bar, then press Enter.

3. Input User Name and Password, then click "OK" (The default User Name and Password are "admin").

4. Click "Quick Setup" on the sidebar. It allows you to setup the Router for accessing Internet quickly all in one page.



5. Configure the IP address and Subnet Mask for LAN (Only using the new IP address can you log into the WEB configuration interface).

**LAN Interface Setup**

IP Address: 192.168.1.1  
Subnet Mask: 255.255.255.0

6. There are five WAN types for selection in this section, please choose the correct one and enter the parameters according to what your ISP provided for you.

**WAN Interface Setup**

WAN Access Type: Static IP  
IP Address: 192.168.1.1  
Subnet Mask: 255.255.255.0  
Default Gateway: 192.168.1.1  
DNS: 192.168.1.1

7. Choose the Enable IPTV option to enable IPTV function, and please enter the Internet and IPTV VIDs provided by corresponding service providers and choose the port for IPTV.

**IPTV**

Enabled IPTV  
Internet Vid ID: 1  
IPTV Vid ID: 10  
IPTV PORT: LAN1 LAN2 LAN3 LAN4

8. You can rename the SSID and setup many basic wireless settings in the WLAN Interface Setup section. Please refer to next step to setup encryption.

**WLAN Interface Setup**

Disable Wireless LAN Interface  
Band: 2.4 GHz (B+G+N)  
Mode: AP  
SSID: TOTOLINK-F1  
Channel Width: 40MHz  
Control Sideband: Upper  
Channel Number: 11  
Data Rate: Auto  
Encryption: Disable

9. WPA-Mixed encryption type mixes WPA/WPA2 together. It will provide the best security for your router. (Pre-Shared Key should be 8-63 ASCII characters in Passphrase format).

**Encryption:** WPA-Mixed  
Authentication Mode:  Enterprise (RADIUS)  Personal (Pre-Shared Key)  
WPA Cipher Suite:  TKIP  AES  
WPA2 Cipher Suite:  TKIP  AES  
Pre-Shared Key Format: Passphrase  
Pre-Shared Key:

10. You can specify the device's time zone according to GMT (Greenwich Mean Time).

**Time Zone Setting**

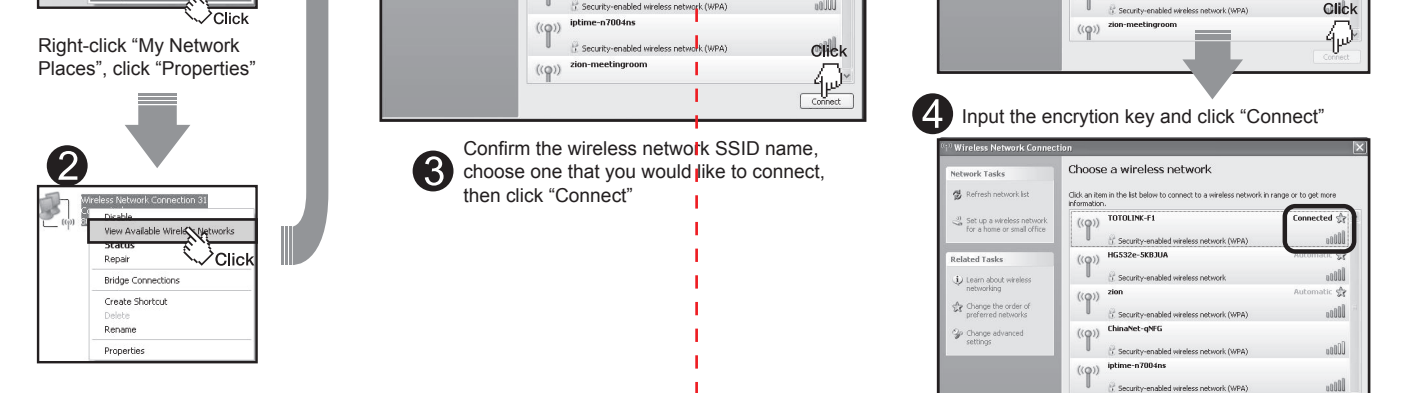
Enable NTP client update  
Time Zone Select: GMT+7:00 (Bangkok, Hanoi, Jakarta)  
NTP server: 192.5.41.41 - North America

After all the above settings, please click Save button, please don't turn off or reboot the router while saving settings.

**NOTE:**  
After you set the Encryption Key, please remember your SSID and the Encryption Key to connect with your wireless LAN.

# 4 Wireless Network Connection

1. Right-click "My Network Places", click "Properties"
2. Right-click "Wireless Network Connection", and click "View Available Wireless Networks"
3. Confirm the wireless network SSID name, choose one that you would like to connect, then click "Connect"
4. Input the encryption key and click "Connect"



5. Have connected wireless network, you can access Internet through wireless mode.